



# Winter Bale Grazing

Van Mansheim  
Colome, SD

1

## ManBull Farming – Colome, SD

Van & Kirk Mansheim



### ► Soil Health Practices

- No-till since 2010
- Diverse Crop Rotation (Oats, Wheat, Corn, Soybeans and Alfalfa)
- Decreasing Synthetic Fertilizers/Chemicals (2016)
- Cover crops wherever we can following the cash crop (2014)
- Custom Winter Grazing on crop and hay land
- Custom Biological Effective Management Grazing on Native Rangeland



2

# Winter Bale Grazing



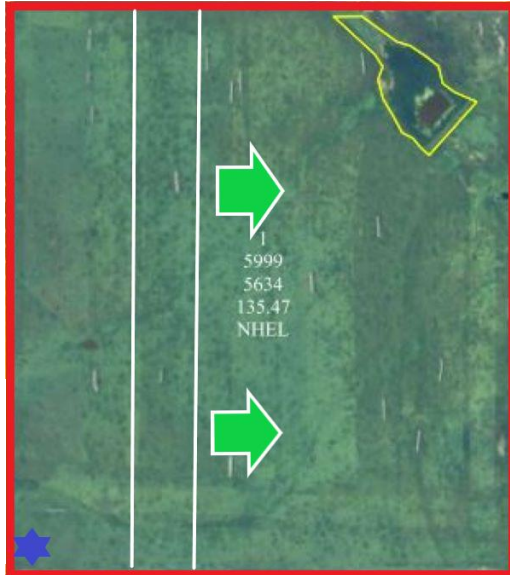
3

# Bale Grazing Setup



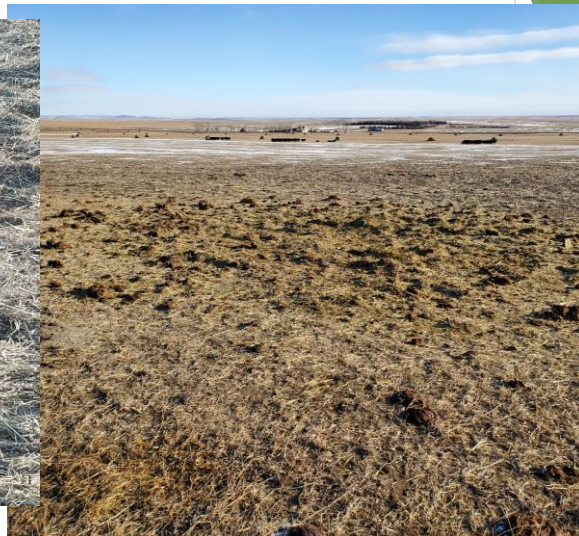
4

# Bale Grazing Setup



5

# When to move to new row of Bales ????



6

## Moving to next row of Bales



7

## Moving Wire in Deep Snow



8



South Dakota  
Soil Health  
Coalition

9

## Deep Snow Challenges – “Systems Approach”



South Dakota  
Soil Health  
Coalition

10

## Improving Water Infiltration



11

## Not Mining your Soil



### ▶ \$\$\$\$ of Nutrients Per Ton of Hay Removed

▶ Nitrogen	\$ 26
▶ Phosphorus	\$ 6
▶ Potassium	\$ 39
▶ Sulfur	\$ 2
▶ <b>Total</b>	<b>\$ 73</b>

12

## Improve Forage Production



# GREENER PASTURES

## Bale Grazing





# GREENER PASTURES



## Bale Grazing

Bale Grazed Pasture = \$90/acre Revenue

Non- Bale Grazed = \$43/acre

1<sup>st</sup> year (2006) - \$47/Acre improvement

2<sup>nd</sup> year (2007) - \$38/Acre improvement

3<sup>rd</sup> year (2008) - \$35/Acre improvement

4<sup>th</sup> year (2009) - \$28/Acre improvement

5<sup>th</sup> year (2010) - \$21/Acre improvement

15



# GREENER PASTURES



## Natural Nutrient Input

80% of what goes into a  
cow, comes out of the cow!

Fertilizer Value = \$0.30/cow/day

16





# GREENER PASTURES

## Bale Grazing



17

Questions ???



18